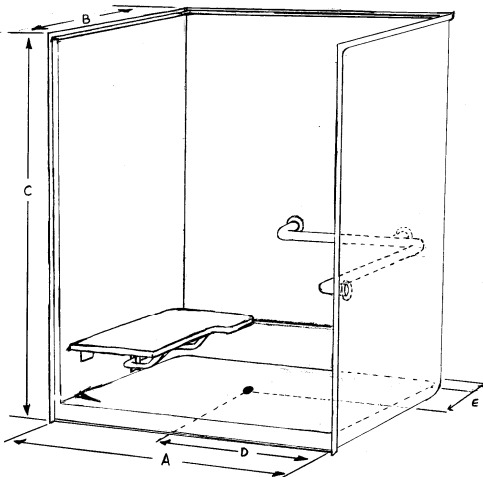




Spurlin  
Industries, Inc.

## Model HBF 6232 L/R

"L" Shaped Bar & Folding Seat  
Fiberglass ADA Shower Stall



Unit Dimensions (Tolerances + or - 1/4")

	Finished	Rough
A	61 1/2"	
B	31"	32 1/4"
C	75"	75 3/4"
D	30 3/4"	
E	15 5/8"	

Note: "E" is from back wall to center drain

### Best Warranty in the Business

Spurlin Industries warrants each unit against defects in materials and workmanship which may alter the appearance or affect performance of your unit for a full 5 years. Spurlin will repair, refinish, or replace any defective unit to ensure your complete satisfaction.

10/08

**Nominal Sizes: 62" x 32" x 75"**

**Inside Dimensions: 60" x 30" x 74 7/8"**

### Features:

- ◆ 3/4" or 2" dam - 0" interior threshold
- ◆ Factory Mounted ADA Compliant Grab Bar
- ◆ ADA Compliant Fold Up Padded Seat
- ◆ Left or Right Hand Seat
- ◆ Slip resistant bottom

### Options:

- ◆ White Grab Bars
- ◆ Delta hand held shower
  - ◆ Model T13H153
- ◆ Stainless steel curtain rod
- ◆ Shower curtain and hooks
- ◆ No caulk drain
- ◆ Stainless steel soap dish
- ◆ Flexible shower dam

### Certified Compliance with Standards

Spurlin Industries' fiberglass bathroom fixtures display the certification label of the Universal Laboratory, Inc. File No. 19451 which demonstrates compliance with ANSI Z124.1 & Z124.2 and with HUD/FHA UM-73. Certification is based on regular inspection and testing at each plant of fabrication.

### Setting Tomorrow's Standards Today

Spurlin Industries fiberglass bath fixtures not only exceed industry standards but must also pass our own supreme standards of excellence. Each unit is manufactured to exacting specifications with strict attention to detail and quality.

Certification labels also verify compliance with the requirements for Class B material under NFPA Number 101 and with the Minimum Property Standards for Care Type and elderly housing.

### INSTALLATION INFORMATION

1. All 3/4" barrier free units must be stored on their backs to prevent bowed thresholds and drains.
2. Foundation materials are mandatory under the bottom of each unit to support wheelchair. Spread a bed of foundation materials around drain and extend to edges of shower floor.

CONCRETE FLOOR INSTALLATION – Use 90 degree angle bracket (available at hardware store) with pre-drilled holes to hold down the center of threshold to prevent moving during installation.

WOOD FLOOR INSTALLATION – Drill 1/8" pilot hole and screw to hold down the center of threshold to prevent moving during installation.